

# MONTHLY MEMBERSHIP PROGRESS REPORT

District 27 C2

Results as of: 6/30/2020

GMT:

LOCATION WISCONSIN

GMT CA

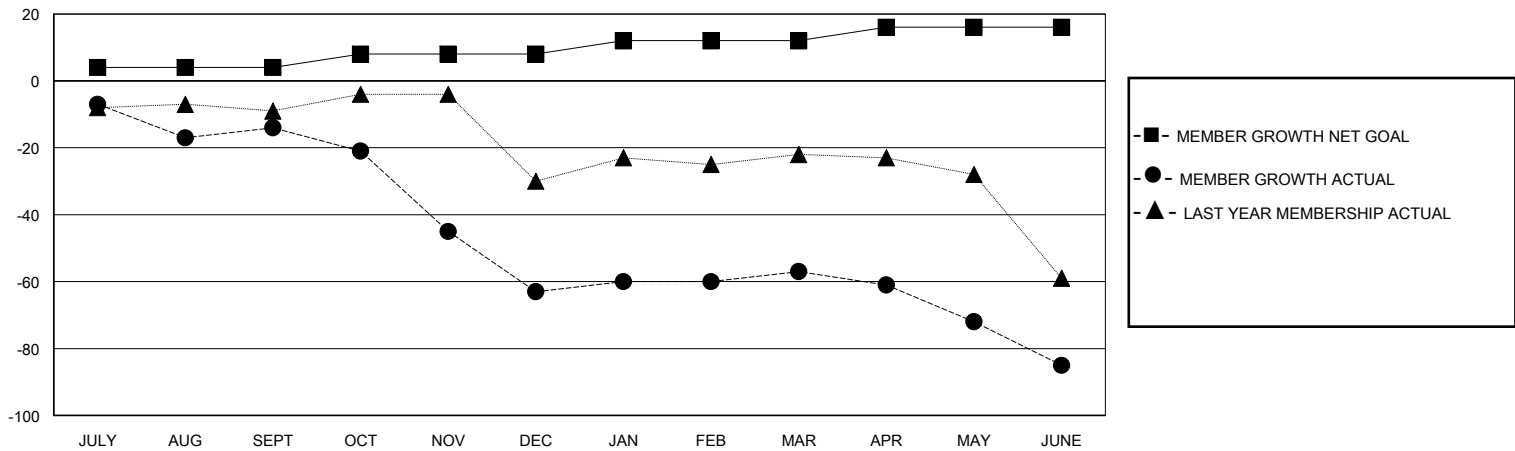
Clubs			
RESULTS FOR 2019-2020			
QUARTER	NEW CLUB GOAL	NEW CLUBS	DROPPED CLUBS
JULY/AUG/SEPT	0	0	0
OCT/NOV/DEC	0	0	1
JAN/FEB/MAR	0	0	0
APR/MAY/JUNE	0	0	0

Members			
RESULTS FOR 2019-2020			
QUARTER	MEMBER GROWTH NET GOAL	MEMBER GROWTH ACTUAL	DROPPED MEMBERS ACTUAL (including transfers)
JULY/AUG/SEPT	4	36	48
OCT/NOV/DEC	4	16	64
JAN/FEB/MAR	4	34	20
APR/MAY/JUNE	4	17	42

GOALS AND ACTUAL NEW CLUBS CUMULATIVE



GOALS AND ACTUAL MEMBERS CUMULATIVE



DROPPED CLUBS: 1	27 CLUBS OF 40 ADDED 1 OR MORE NEW MEMBERS	<b>GENDER DISTRIBUTION</b> MALE 952 (73.46%) FEMALE 344 (26.54%)
<b>DROPPED MEMBERS</b> DECEASED 18 CLUB CANCELLED 23 OTHER 133 TOTAL 174	<a href="#">CLICK HERE FOR CUMULATIVE MEMBERSHIP DATA</a>	TOTAL FAMILY UNIT MEMBERS 315 FAMILY MEMBERS PAYING HALF DUES 159